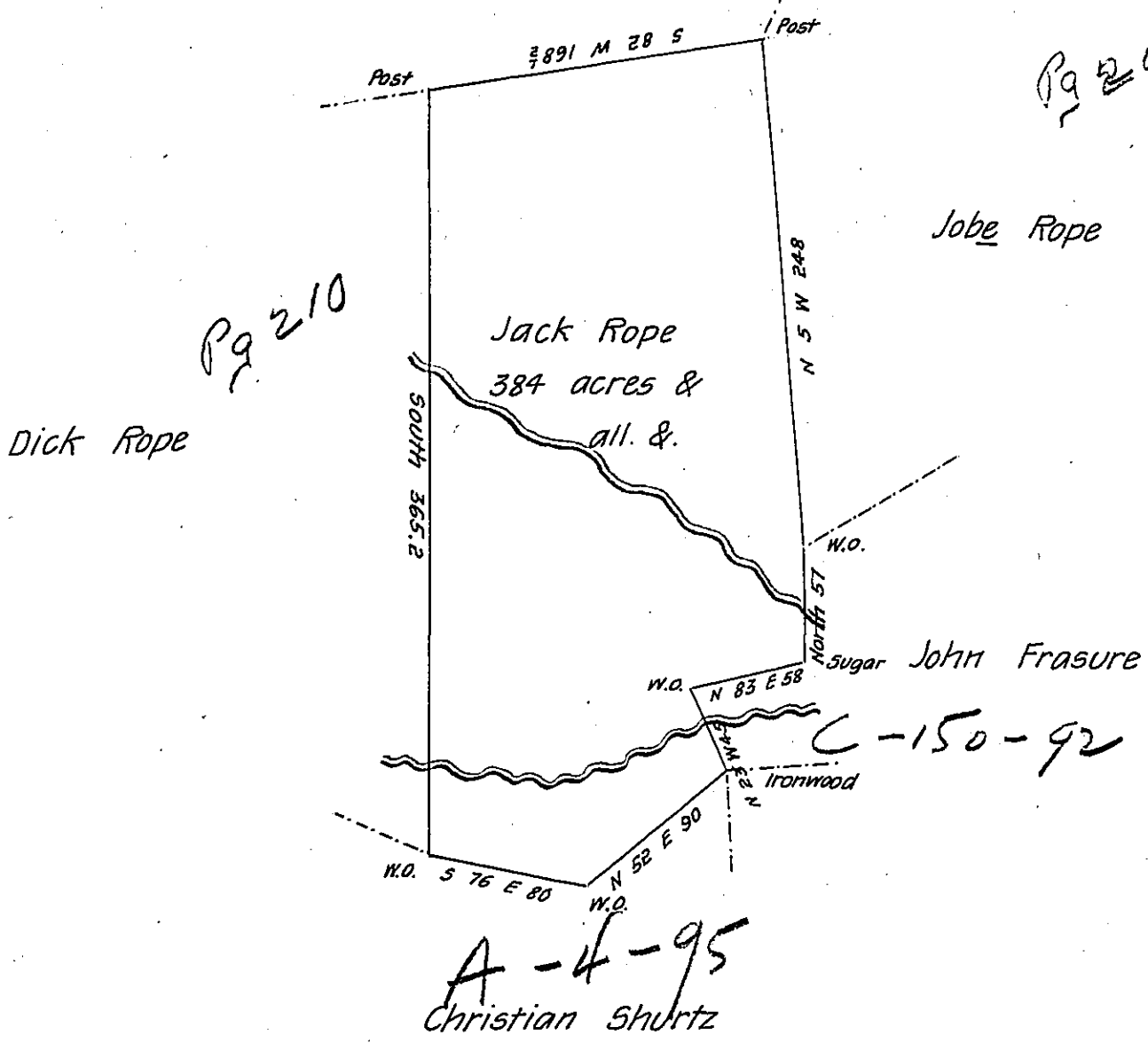


Joshua Wright Now
Mulford Tredwell



Situate on Hughes camp Branch one of the head waters of Wills
Creek in Harrison township Bedford County Containing 384 acres and allow-
ance of Six per Cent for Roads &c. Surveyed for John Metzger the 5th day of
May 1841 in pursuance of a warrant for 400 acres dated 12-March 1794 grant-
ed in the name of Jack Rope

Michael Reed D.S.

To Jacob Sallade Esq^r

S. G.

IN TESTIMONY that the above is a copy of the original remaining on file in
the Department of Internal Affairs of Pennsylvania, made
conformably to an Act of Assembly approved the 16th day of
February, 1833, I have hereunto set my Hand and caused
the Seal of said Department to be affixed at Harrisburg,
this nineteenth day of October 1906

Isaac D. Brown
Secretary of Internal Affairs.